

# GLAZEGUARD®

## LIGHTWEIGHT INFILL SOLUTIONS TO MEET YOUR PROJECT NEEDS

**Citadel's Glazing Infill Panels are the perfect complement or replacement for glass in storefront, curtain wall, and window applications.**

### Features & Benefits:

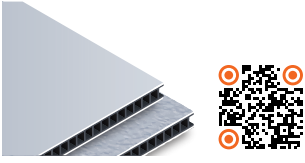

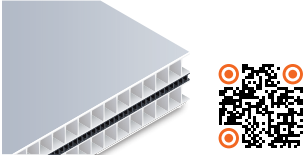

- Third-party tested
- Water and impact resistant options
- Easily cut-to-size in the field (or from the manufacturer)
- Low maintenance
- Quick lead times (2 weeks or less)
- Panel composition warranty (10 years)

### Finishes:

Available in a variety of colors and finishes:

- Kynar 500® — long lasting, benchmark for quality
- Anodized — several options to match storefront and curtain wall systems
- Polyester — economical and durable

Visit [www.citadelap.com](http://www.citadelap.com) for a full color chart.

PRODUCT	FEATURES	COMPOSITION	THICKNESS	R-VALUE	WEIGHT
<b>GlazeGuard 250 WR</b> 	<ul style="list-style-type: none"> <li>▪ Water Resistant</li> <li>▪ ASTM E84</li> <li>▪ ASTM E72</li> </ul>	<ul style="list-style-type: none"> <li>▪ Textured or Smooth Aluminum Face and Back</li> <li>▪ Polypropylene Core</li> </ul>	¼"	1.24	Approx. 0.61 to 1.00 lbs per ft <sup>2</sup>
<b>GlazeGuard 1000 WR+</b> 	<ul style="list-style-type: none"> <li>▪ Water Resistant</li> <li>▪ Increased Thermal Value</li> <li>▪ ASTM E84</li> <li>▪ ASTM E72</li> </ul>	<ul style="list-style-type: none"> <li>▪ Textured or Smooth Aluminum Face and Back</li> <li>▪ Polypropylene Stabilizers</li> <li>▪ EPS or ISO Foam Core</li> </ul>	1"	<ul style="list-style-type: none"> <li>▪ EPS: 4.19</li> <li>▪ ISO: 6.13</li> </ul>	Approx. 0.80 to 1.23 lbs per ft <sup>2</sup>
<b>GlazeGuard 1000 IR</b> 	<ul style="list-style-type: none"> <li>▪ Impact Resistant</li> <li>▪ Water Resistant</li> <li>▪ Meets HVHZ Requirements</li> <li>▪ ASTM E84</li> <li>▪ ASTM E72</li> </ul>	<ul style="list-style-type: none"> <li>▪ Smooth Aluminum Face and Back</li> <li>▪ Polypropylene Stabilizers</li> <li>▪ Polypropylene Core</li> </ul>	1"	2.72	Approx. 1.89 lbs per ft <sup>2</sup>
<b>GlazeGuard 1300 IR*</b> 	<ul style="list-style-type: none"> <li>▪ Florida Product Approval for use in Level D, Level E, and HVHZ</li> <li>▪ Small and Large Missile Impact Resistant</li> <li>▪ Fits Standard Curtain Wall Systems</li> <li>▪ ASTM E84</li> <li>▪ ASTM C1363</li> </ul>	<ul style="list-style-type: none"> <li>▪ Smooth Aluminum Face and Back</li> <li>▪ High Density Polypropylene Stabilizers</li> <li>▪ High Density Polypropylene Cores</li> </ul>	1-5/16"	2.2	Approx. 2.35 lbs/ft <sup>2</sup>

\*ASTM 518 has a value of 2.3.

### STANDARD SIZES

Widths: 48" or 60"

Length: 96", 120", or 144"

### WARRANTY

#### Textured:

Polyester (5 Year Warranty)

Acrylic Urethane (5 Year Warranty)

#### Smooth:

Kynar 500 Solid Tones, Mica/Metallic

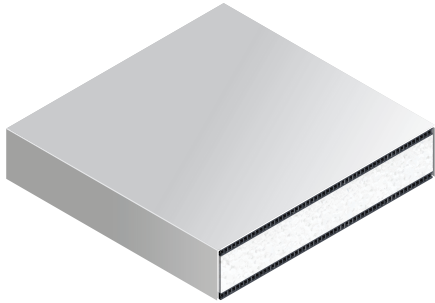
(30 Year Warranty)

Anodized (20 Year Warranty)

Polyester (5 Year Warranty)

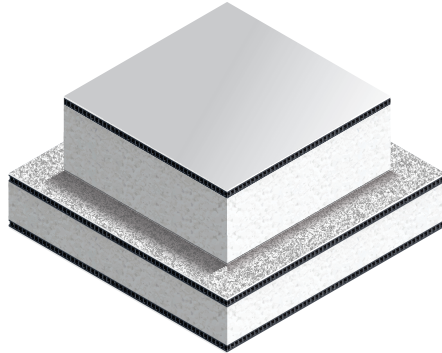
# GLAZEGUARD EDGES

## GLAZEGUARD WITH WRAPPED EDGES



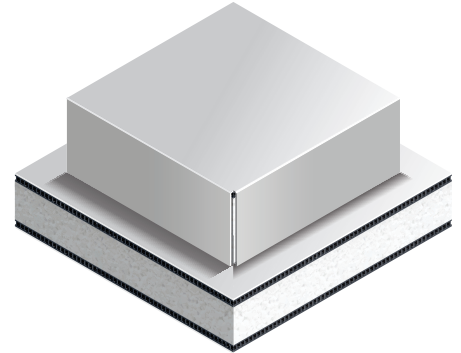
- 1-4 Edges Wrapped Per Project Requirements
- Overall Panel Thickness: Up to 3 ½"
- Smooth Finishes
- Sealed with Silicone Sealant
- Polypropylene Stabilizers
- EPS or ISO Foam Core

## GLAZEGUARD WITH OFFSET EDGES

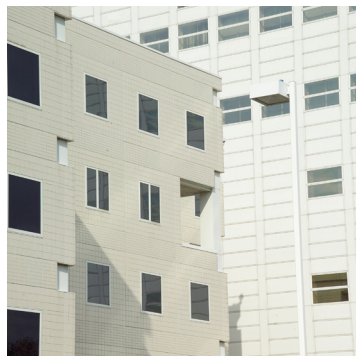


- Offset Available in Various Dimensions
- Overall Panel Thickness: Up to 3 ½"
- Foam Thickness Varies to Meet Size and R-Value Requirements
- Smooth and Textured Finishes
- Polypropylene Stabilizers
- EPS or ISO Foam Core

## GLAZEGUARD WITH WRAPPED & OFFSET EDGES



- All Edges Wrapped on Offset Section
- Shipped Separately from Standard Glazing Panel
- Offset Section Adhered in the Field
- Smooth Finishes
- Polypropylene Stabilizers
- EPS or ISO Foam Core



Get more information on all of Citadel's cladding solutions at [www.citadelap.com/products](http://www.citadelap.com/products).

### Citadel Architectural Products

6198 W Airport Blvd  
Greenfield, IN 46140  
phone (317) 894-9400  
[www.citadelap.com](http://www.citadelap.com) • [info@citadelap.com](mailto:info@citadelap.com)

AIA  
Continuing  
Education  
Provider



ISO 9001  
QMI-SAI Global  
#1501282



MADE IN THE U.S.A.