



CITADEL

an MTL company

COLOR GUIDE

CLADDING SYSTEMS, GLAZING PANELS, AND ACCESSORIES

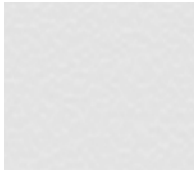
COLOR CHART

STOCK POLYESTER FINISHES

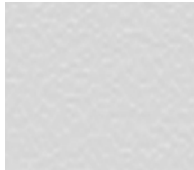


Durable yet budget-friendly. These finishes offer excellent durability while providing a more economical alternative. Available in a wide range of colors, the textured finishes help conceal any dings or dents and the smooth finishes provide an alternate option for glazing infill.

SERIES A: Standard Textured Polyester (.010")



HIGH GLOSS
WHITE



SHASTA
WHITE



IVORY



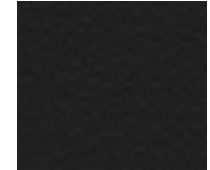
PUEBLO
BEIGE



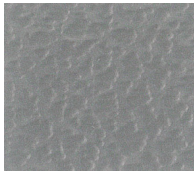
STATUARY
BRONZE



CLASSIC
BRONZE



EBONY

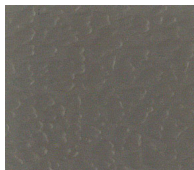


METALLIC
SILVER

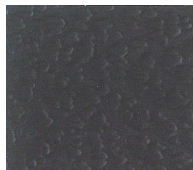
SERIES B: Premium Textured Acrylic Urethane (.010")



SILVER
GREY



SLATE
GREY



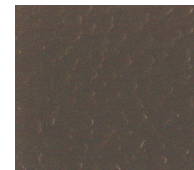
CHARCOAL
GREY



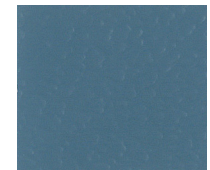
SANDSTONE



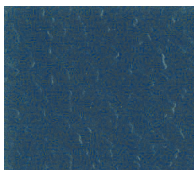
SIERRA
TAN



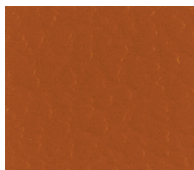
MEDIUM
BRONZE



SKY
BLUE



REGAL
BLUE



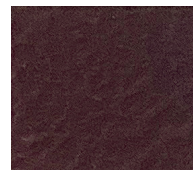
TERRA
COTTA



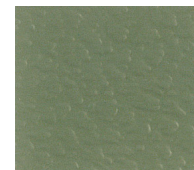
REGAL
RED



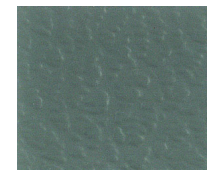
COLONIAL
RED



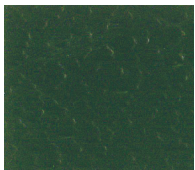
BRANDYWINE



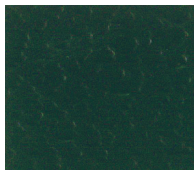
PATINA
GREEN



HEMLOCK
GREEN



SHERWOOD
GREEN

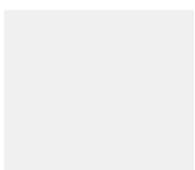


HARTFORD
GREEN

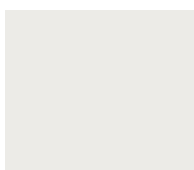


MANSARD
BROWN

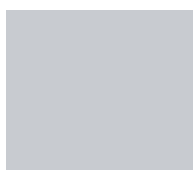
SERIES D: Standard Smooth Polyester (.024")



POLAR WHITE
(48" ONLY)



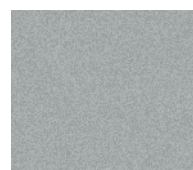
CLASSIC
WHITE



BATTLESHIP GREY
(48" ONLY)



CLASSIC
BRONZE



METALLIC
SILVER

COLOR CHART

STOCK PVDF FINISHES

30
YEAR
FINISH
WARRANTY

Guaranteed performance just got better. As an industry benchmark, Kynar 500® coatings have long been known for quality and durability.

Kynar 500® - Solids

						
ARCTIC WHITE <input type="checkbox"/>	RESERVE WHITE <input type="checkbox"/>	SHASTA WHITE	BONE WHITE <input type="checkbox"/>	STONE WHITE <input type="checkbox"/>	SILVER GREY <input type="checkbox"/>	SLATE GREY <input type="checkbox"/>
						
CITYSCAPE <input type="checkbox"/>	MUSKET GREY <input type="checkbox"/>	CHARCOAL GREY <input type="checkbox"/>	GRAPHITE (UMBRA GREY) <input type="checkbox"/>	EBONY <input type="checkbox"/>	MATTE BLACK <input type="checkbox"/>	ALMOND <input type="checkbox"/>
						
IVORY <input type="checkbox"/>	SANDSTONE <input type="checkbox"/>	PUEBLO BEIGE <input type="checkbox"/>	SIERRA TAN <input type="checkbox"/>	MEDIUM BRONZE <input type="checkbox"/>	STATUARY BRONZE <input type="checkbox"/>	DARK BRONZE <input type="checkbox"/>
						
MANSARD BROWN <input type="checkbox"/>	EXTRA DARK BRONZE <input type="checkbox"/>	SKY BLUE <input type="checkbox"/>	REGAL BLUE <input type="checkbox"/>	TERRA COTTA <input type="checkbox"/>	BRITE RED (48" ONLY) <input type="checkbox"/>	REGAL RED <input type="checkbox"/>
						
COLONIAL RED <input type="checkbox"/>	BRANDYWINE <input type="checkbox"/>	PATINA GREEN <input type="checkbox"/>	HEMLOCK GREEN <input type="checkbox"/>	SHERWOOD GREEN <input type="checkbox"/>	HARTFORD GREEN <input type="checkbox"/>	

COLOR CHART

STOCK PVDF FINISHES *(continued)*

30
YEAR
FINISH
WARRANTY

The beauty of color, the shine of metal. Mixing mica or metallic flakes within the paint coating allows the base color to offer additional pop, bringing depth to the building elevation. This look is further enhanced by the way in which these flakes reflect the light from different viewpoints.

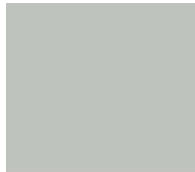
Kynar 500 - Miccas



SILVER METALLIC >



PLATINUM >



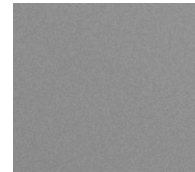
MOONRISE METALLIC >



ANODIC CLEAR >



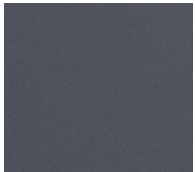
NORTH SEA MIST >



PEWTER >



WEATHERED ZINC >



GUN METAL >



LIQUID COPPER >



ATLANTIC SUNRISE >



CHAMPAGNE METALLIC >



CHAMPAGNE BRONZE >



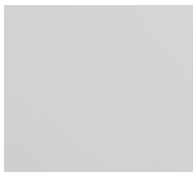
DESERT SAND >

STOCK ANODIZED FINISHES

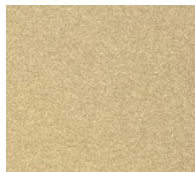
20
YEAR
FINISH
WARRANTY

Anodized aluminum. These finishes are chemically and electrically produced (not just an anodic-look paint), and offer an excellent complement to storefront and glazing system extrusions.

Anodized



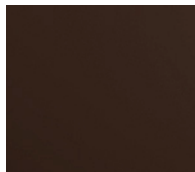
CLEAR ANODIZED >



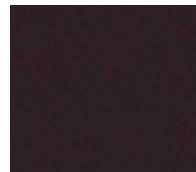
CHAMPAGNE ANODIZED >



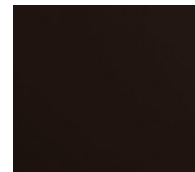
MEDIUM BRONZE ANODIZED >



DARK BRONZE ANODIZED >



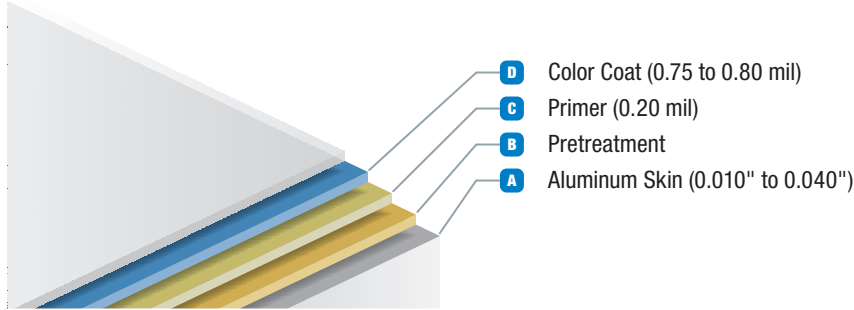
EXTRA DARK BRONZE ANODIZED >



BLACK ANODIZED >

Anodized finishes are Exterior Standard No. 1

COLOR CHART



AVAILABILITY BY PRODUCT

Panel 15®	SinoCore®	ProCore™	Panel 20®	Envelope 2000® RV / DRV	Envelope 2000 RR / RS	GlazeGuard®
•	•	•				•
•	•	•				•
	•	•	•	•	•	•
	•	•	•	•	•	•

CATEGORY	TYPE	COMPOSITION	FEATURES & BENEFITS	DESCRIPTION
SERIES A, D	1-Coat ¹ Textured (.010")/ Smooth (.024") Polyester	D - Color Coat B - Pretreatment A - Aluminum Skin	<ul style="list-style-type: none"> • Economical choice for coatings • Durable, hard surface • Available in a wide range of colors 	Thermosetting paint system applied with similar techniques to PVDF (based on volume).
SERIES B	1-Coat Textured Acrylic Urethane (.010")	D - Color Coat C - Primer B - Pretreatment A - Aluminum Skin	<ul style="list-style-type: none"> • Used for premium/custom colors • Similar in performance to polyester • Good gloss retention and weatherability 	Two-component cross-linked system applied with electrostatic or conventional spray equipment.
KYNAR 500 - SOLIDS	2-Coat Smooth PVDF	D - Color Coat C - Primer B - Pretreatment A - Aluminum Skin	<ul style="list-style-type: none"> • Industry benchmark for quality • Unsurpassed color retention, chemical resistance and film erosion resistance 	Heat-set coating using 70% Kynar 500 or Hylar 5000® resins.
KYNAR 500 - MICAS	2-Coat Smooth PVDF	D - Color coat C - Primer B - Pretreatment A - Aluminum skin	<ul style="list-style-type: none"> • Metallic look with mica flake • Performance same as standard 2-coat smooth PVDF 	Heat-set coating using 70% Kynar 500 or Hylar 5000 resins with mica flakes.
ANODIZED	Integral Anodized	<ul style="list-style-type: none"> • Nickel/Hydrate Seal • Colorant² • Aluminum Oxide • Barrier • Aluminum Skin 	<ul style="list-style-type: none"> • Not an anodic look or paint, but a true integral anodized aluminum to match storefront and window extrusions 	Transparent or colored oxidized finish integral to the base aluminum induced with electricity and chemicals.

1 - Primer is present on Polar White and Battleship Grey.
 2 - Clear Anodized does not use a colorant.

QUICK REFERENCE GUIDE



	COMPOSITE PANEL FINISHES	METAL FOR TRIM, FLASHING & ACCESSORIES			
	.024	.040	.050	.063	24 GA STEEL
KYNAR 500 - SOLIDS					
Almond	•	•	•		•
Arctic White	•	•			
Bone White	•	•	•	•	•
Brandywine	•				
Brite Red	•				
Charcoal Grey	•	•			•
Cityscape	•	•	•		•
Colonial Red	•	•			•
Dark Bronze	•	•	•	•	•
Ebony	•	•			
Extra Dark Bronze	•	•			
Graphite (Umbra Grey)	•	•			
Hartford Green	•				
Hemlock Green	•				
Ivory	•				
Mansard Brown	•				
Matte Black	•	•	•		•
Medium Bronze	•	•	•	•	•
Musket Grey	•	•			•
Patina Green	•				
Pueblo Beige	•				
Regal Blue	•				
Regal Red	•				
Reserve White	•				
Sandstone	•	•	•	•	•
Shasta White	•				
Sherwood Green	•				
Silver Grey	•				
Sky Blue	•				

	COMPOSITE PANEL FINISHES	METAL FOR TRIM, FLASHING & ACCESSORIES			
	.024	.040	.050	.063	24 GA STEEL
KYNAR 500 - SOLIDS					
Slate Grey	•	•	•		•
Sierra Tan	•	•	•		•
Statuary Bronze	•				
Stone White	•	•	•	•	•
Terra Cotta	•				
KYNAR 500 - MICAS					
Anodic Clear	•	•			
Atlantic Sunrise	•				
Champagne Bronze	•				
Champagne Metallic	•	•			
Desert Sand	•	•			
Gun Metal	•	•	•		
Liquid Copper	•				
Moonrise Metallic	•			•	•
North Sea Mist	•				
Pewter	•				
Platinum	•				
Silver Metallic	•	•			
Weathered Zinc	•	N/A	•	N/A	•
ANODIZED					
Black Anodized	•	•	N/A		
Champagne Anodized	•		N/A		
Clear Anodized	•	•	•	•	
Dark Bronze Anodized	•	•	N/A		
Extra Dark Bronze Anodized	•	•	N/A		
Medium Bronze Anodized	•		N/A		

Citadel Architectural Products

6198 W Airport Blvd
Greenfield, IN 46140
(800) 446-8828

www.citadelap.com • info@citadelap.com

